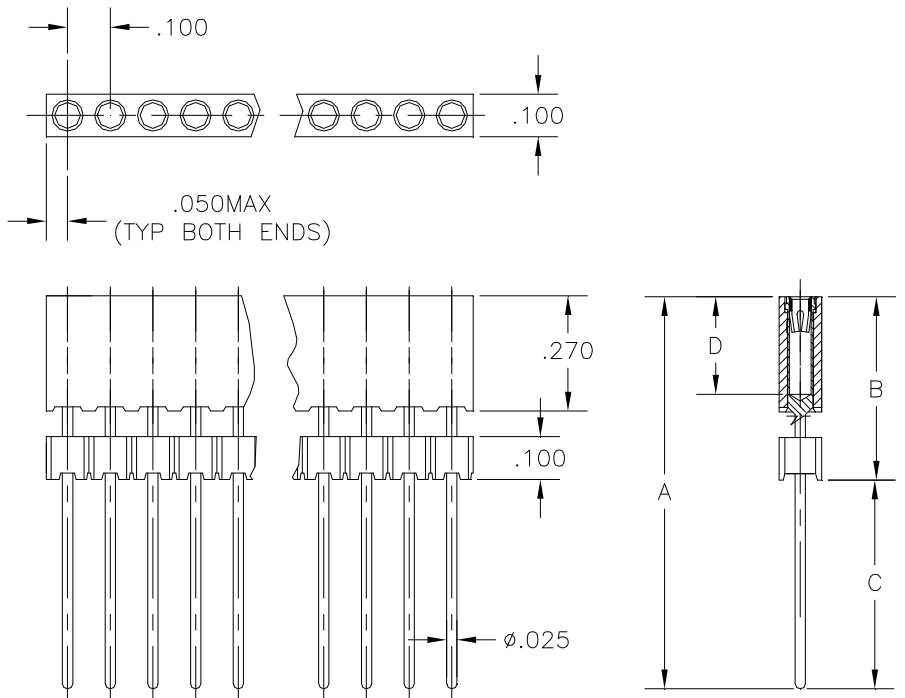


.100	Socket	Single Row - .025 SMS Stacking	Straight	Thru Hole
-------------	---------------	---------------------------------------	-----------------	------------------

.100" Center, .025" Square Pin, Single Row Straight Header



Base Part Number	A		B		C		D		E		Plating Options	Number of Positions
	mm	Inch	mm	Inch	mm	Inch	mm	Inch	mm	Inch		
1193	13.34	0.525	10.92	0.430	2.41	0.095	5.79	0.228			G2LF : G1	4-40
1187	18.29	0.720	6.86	0.270	11.43	0.450	5.79	0.228			G2LF : G1	4-40
1192	18.29	0.720	16.00	0.630	2.29	0.090	5.79	0.228			G2LF : G1	4-40
1194	18.29	0.720	13.46	0.530	4.83	0.190	5.79	0.228			G2LF : G1	4-40
1189	18.29	0.720	10.92	0.430	7.37	0.290	5.79	0.228			G2LF : G1	4-40
1197	23.37	0.920	18.54	0.730	4.83	0.190	5.79	0.228			G2LF : G1	4-40
1190	23.37	0.920	10.92	0.430	12.45	0.490	5.79	0.228			G2LF : G1	4-40
1188	23.37	0.920	6.86	0.270	16.51	0.650	5.79	0.228			G2LF : G1	4-40
1191	23.37	0.920	16.00	0.630	7.37	0.290	5.79	0.228			G2LF : G1	4-40
1196	23.37	0.920	13.46	0.530	9.91	0.390	5.79	0.228			G2LF : G1	4-40

Technical Notes	
Contact Material:	Shell: Phosphor Bronz - Contact Clip: 6 finger BeCu [#47]
Insulation Material:	Glass Filled Nylon 46 - UL 94V-0 rated - Black (std)
Heat Deflection:	260°C @ 264 PSI per ASTM D648
Insulation Resistance:	5000 MegOhm @ 500VDC
Current Rating:	3 amps continuous @ 100 VDC/contact
Max Processing Temp:	250°C for 60 seconds
Insertion Force:	Typ initial per: 194 grams(6.8oz) w/.025 inch rd pin & 230 grams(8.1oz) w/.025sq pin
Extraction Force:	Typ initial per: 122 grams(4.3oz) w/.025 inch rd pin & 92 grams(3.2oz) w/.025sq pin
Plastic:	High Temperature Plastic
<p><i>INTERCONNECT SYSTEMS INC.</i></p> <p>741 Flynn Road, Camarillo, Ca 93012 · (805) 482-2870 · fax (805) 482-8470 · e-mail:info@isipkg.com</p>	