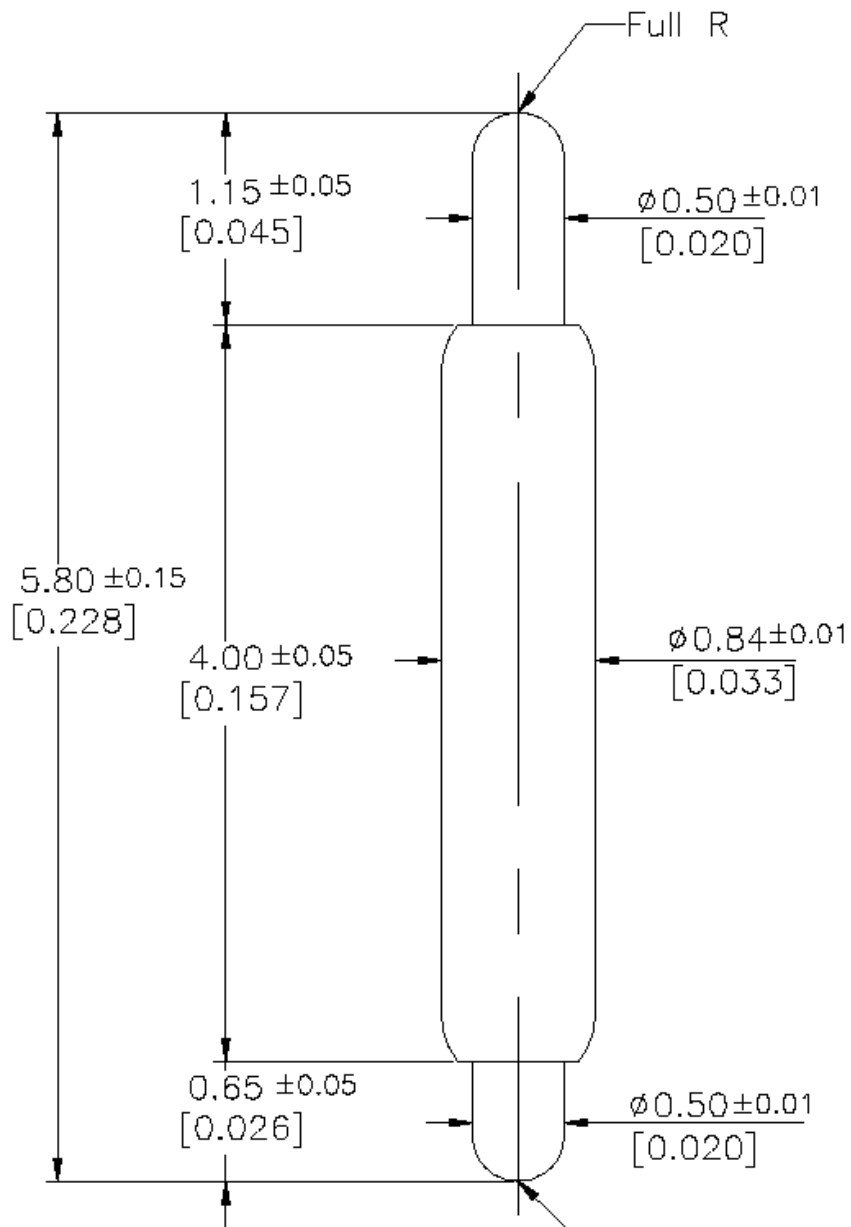


REV	DESCRIPTION	DATE	BY
A	NEW DRAWING	10/06/09	JAG

SKT3337

TOP



Pointing accuracy : $\pm 0.050\text{mm}$

Spring force [$\pm 20\%$]

13.5g(0.476oz) at initial travel

31.0g(1.093oz) at 0.70mm(0.0276) recommended travel

45.8g(1.616oz) at 1.30mm(0.0512) full travel

Material & Finish

Plunger-Top Hardened Beryllium copper / Gold Plated

Plunger-Bottom Hardened Beryllium copper / Gold Plated

Barrel Phosphor Bronze / Gold Plated

Spring Stainless Steel / Gold Plated

BOTTOM

ALL DIMENSIONS ARE IN MILLIMETERS UNLESS OTHERWISE SPECIFIED



EMULATION TECHNOLOGY, INC.

VLSI and SMT ADAPTERS and ACCESSORIES

759 FLYNN ROAD
CAMARILLO, CA 93012

TEL: (805) 383-8480
FAX: (805) 383-8484

SHEET: 1 OF 1	DATE: 10/06/09	REVISION: A	ASSEMBLY DRAWING
CHECKED:	PREPARED BY: J. GELACIO	ITEM: POGO-PIN-5.80-3	
DO NOT SCALE DRAWING			DESCRIPTION: POGO-PIN-5.80-3