

4

3

2

DWG NO. 1 POGO-PIN-5.58-4

These drawings and specifications are the property of Interconnect Systems, Inc., and shall not be reproduced, or copied, or used without prior written permission.

REVISION HISTORY

REV	DESCRIPTION	ECN	DATE	APRV'D
1	INITIAL RELEASE	--	8/1/17	JG

D

TOP

D

Pointing Accuracy: ± 0.05 mmSpring Force: $\pm 20\%$

C

C

STATE	TRAVEL	SPRING FORCE
Initial Travel	--	6.2g(0.217oz)
Recommended Travel	0.50mm(0.0197")	18.0g(0.635oz)
Full Travel	1.00mm(0.0394")	29.8g(1.052oz)

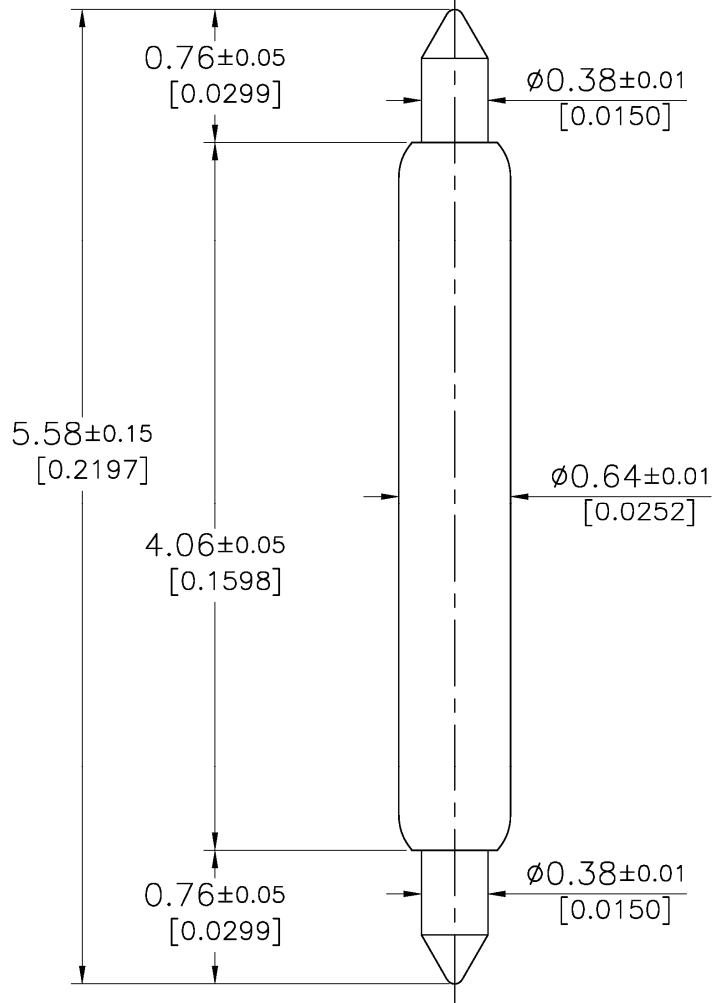
→

←

PART	MATERIAL	FINISH
Spring	Stainless Steel	Gold Plated
Barrel	Phosphor Bronze	Gold Plated
Top Plunger	Pd Alloy	Non-Plated
Bottom Plunger	Hardened Beryllium Copper	Gold Plated

B

B




A

A

BOTTOM

DIMENSIONS ARE IN MM. UNLESS OTHERWISE SPECIFIED TOLERANCES ARE:

DECIMALS:	ANGULAR:
XX ±0.100	X.X° ±1.0°
X.XX ±0.050	X.XX° ±0.5°
X.XXX ±0.025	

CONTRACT NO. TBD				INTERCONNECT SYSTEMS INC. a molex company	
DRAWN BY T. FOOTE		DATE 7/28/17		741 FLYNN ROAD, CAMARILLO, CALIFORNIA 93012	
DESIGNER ET		DATE 7/28/17		TITLE POGO PIN	
CHECKER J. GELACIO		DATE 8/1/17		0.80mm Pitch, E/E Plunger, 18.0g SF, Au Plate Finish	
QA --	DATE --	SIZE A	RoHS	SCALE N/A	DRAWING NO. POGO-PIN-5.58-4
PROCESS ENG. --	DATE --	SAVED AS: POGO-PIN-5.58-4.PDF	FINISHED ASSY: --	REV 1	SHEET 1 OF 1

4

3

2

1

↑